

Homeless Analysis

Sean Perry and Kacey Logan

Homeless Concentrations Over Time

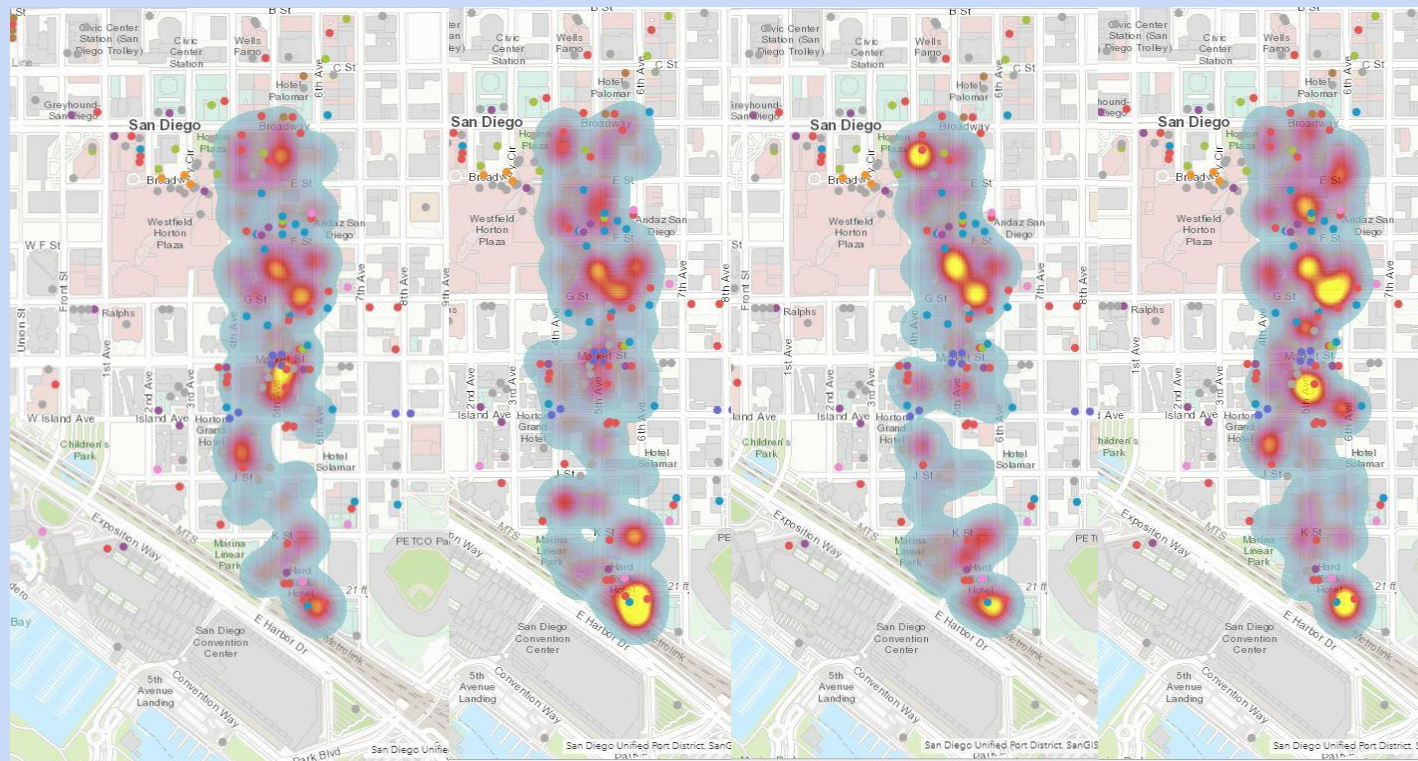
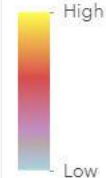
Legend

POI

- restaurant
- bar
- fast_food
- cafe
- monument
- school
- hotel
- convenience
- bench
- waste_basket
- Other

Homeless Data Collection

How many?



April 1-July 1, 2018

Jul 1-Oct 1, 2017

Oct 1-Jan 1, 2018

Jan 1-Apr 1, 2018

April 2014

All these images from google street view, looking north on the east corner of G and 5th

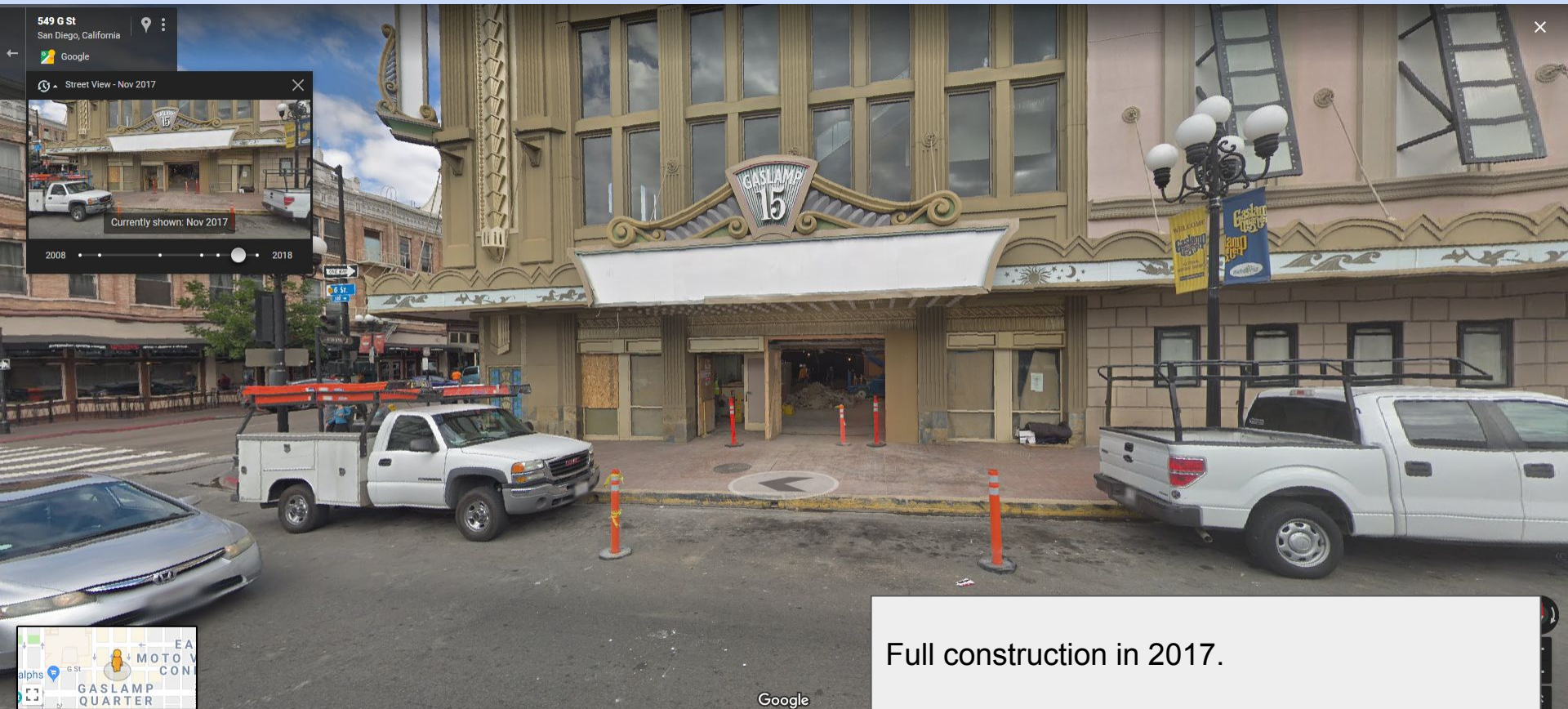


November 2016



In 2016, This building has paper put up in the windows, the cluster has formed in this year

November 2017

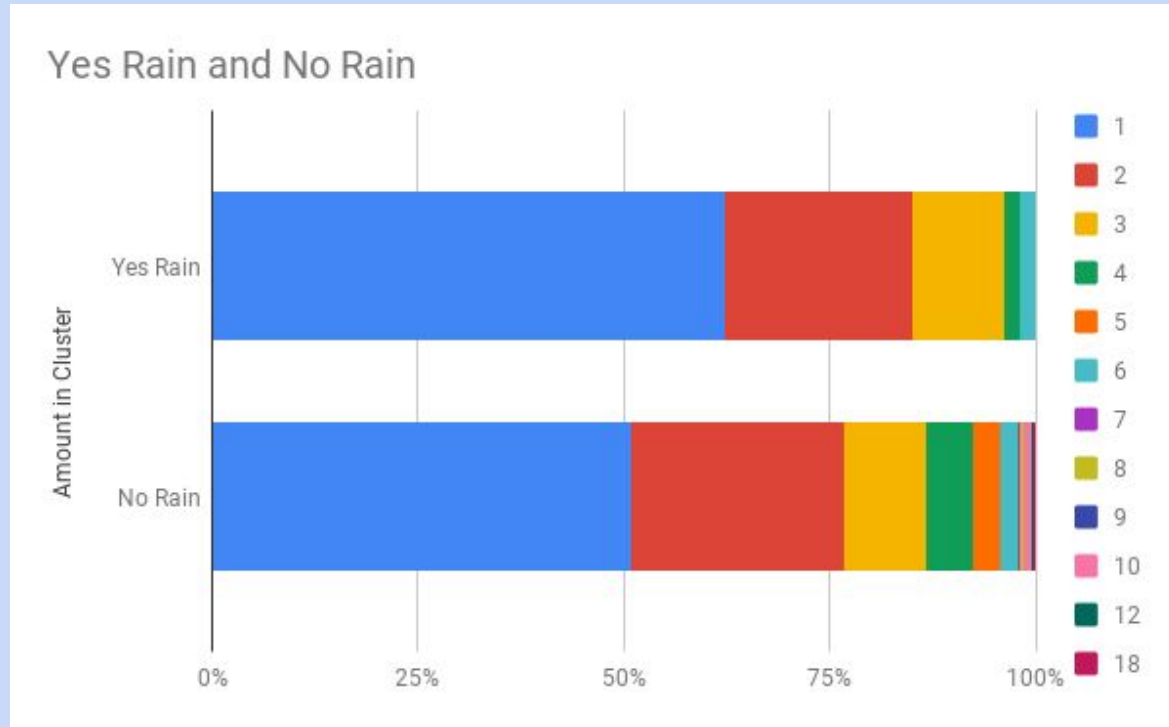


April 2018



Stil signs of construction
Due to this apparent construction starting in 2016, one hypothesis construction lead to the formation of this cluster

Effect of Rain On Homeless Concentration



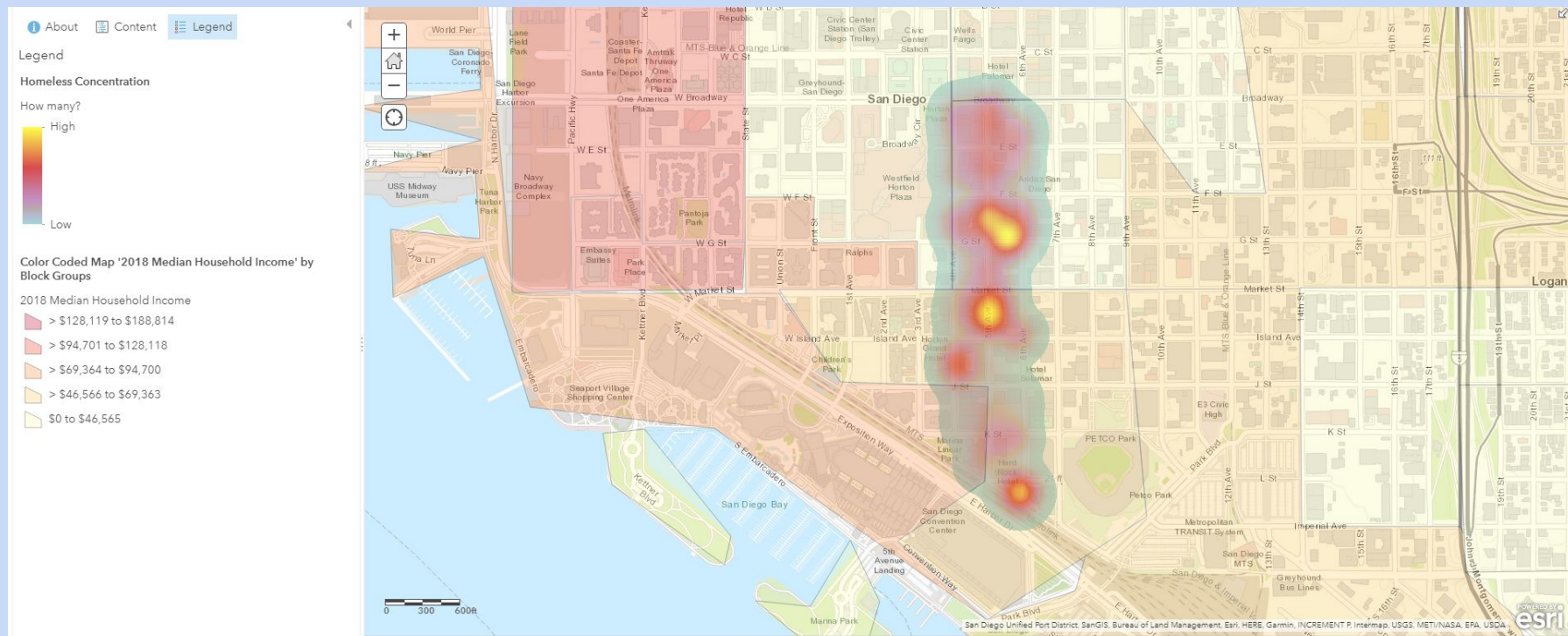
Conclusions

- In the gaslamp district, specific building types and land areas are correlated with higher concentrations of homeless populations
- Homeless populations are strongly drawn to two main areas: a movie theater construction site and the park.

Questions:

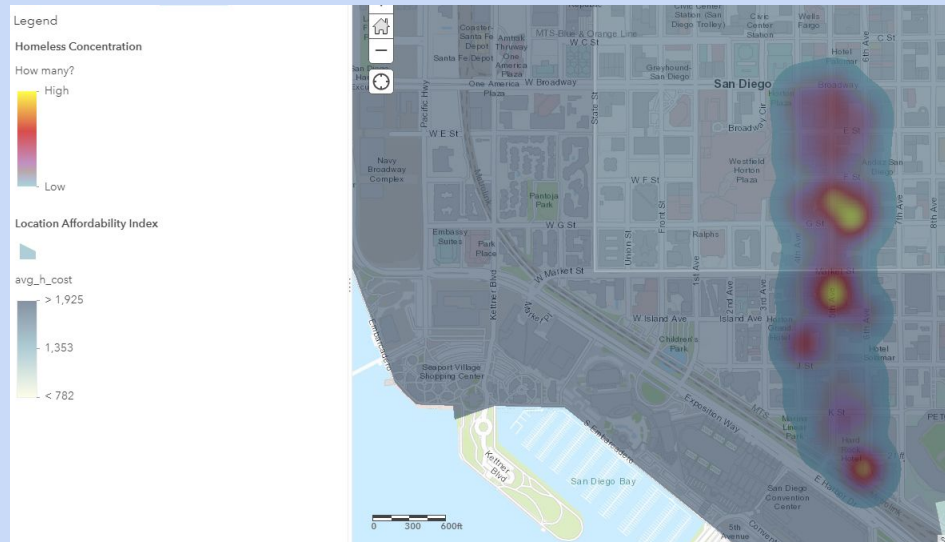
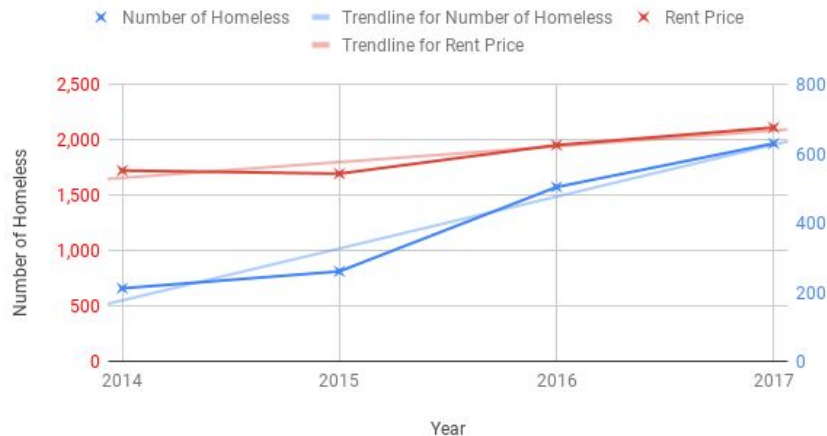
- Does this pattern remain present across more than one year?
- Are there other noticeable concentrations patterns that appear at irregular intervals?
- Do other construction sites have higher amounts of homeless and if so, do homeless populations drop after construction ends?

Income and Homeless Concentrations



January 1, 2018 to July 1, 2018

Comparing Rent And Homeless Counts



January 1, 2018 to July 1, 2018

Conclusions

- In the gaslamp district, low income and high cost of living areas are correlated with higher concentrations of homeless populations
- Homeless populations and rent prices have both increased over time

Questions:

- Does this pattern still hold true with a larger data set?
- Are areas with a low median income and more housing have higher concentrations of homeless overall.